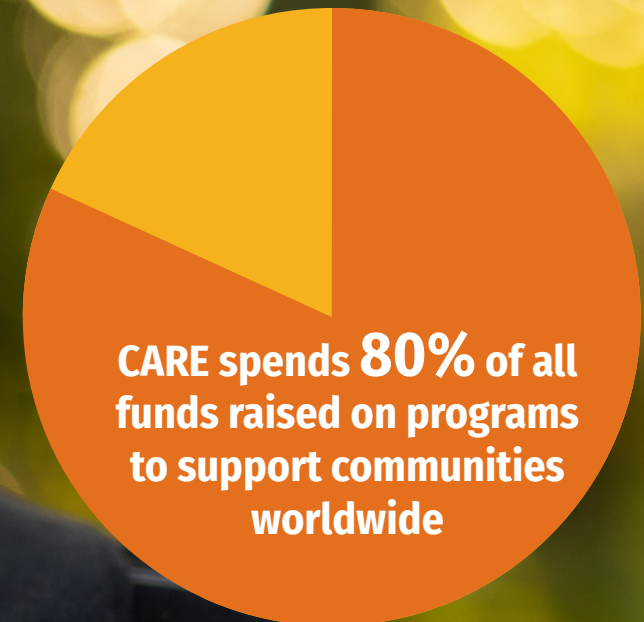




2022 FINANCIAL OVERVIEW



	CARE Australia	CARE Canada	CARE Denmark	CARE Germany	CARE France	CARE India	CARE Japan	CARE Netherlands	CARE Norway	CARE Austria	CARE Peru	Raks Thai	CARE Int'l UK	CARE USA	Care Int'l Secretariat	CARE Int'l AISBL	Comb. Adj.	Total FY22	Total FY21
COMBINED STATEMENT OF ACTIVITY AND NET ASSETS ('000 EURO)																			
SUPPORT AND REVENUE																			
Donor contributions	8,140	3,693	2,243	29,862	15,436	14,456	610	14,084	2,115	9,965	2,581	920	18,319	251,541	62	8,545	-8,608	373,965	237,082
Programs contracted with member organizations	11,725	905	-	2,951	12,290	39,739	-	322	-	600	5,228	448	168	177,409	4,132	10,507	-266,426	-	-
Contributions in kind	-	-	-	-	-	-	5	-	-	3,985	6	8	281	32,056	-	1,274	-1,274	36,340	34,878
Government and non-governmental agencies grants	25,674	35,354	18,481	45,529	24,611	1,149	222	41,680	21,672	32,647	4,304	15,473	26,774	324,401	-	19,897	-19,897	617,970	542,823
Interest and other income	-164	309	195	1,160	729	700	25	242	146	15	57	98	-	5,939	-	742	-742	9,449	11,384
Administrative support	-	-	-	-	-	-	-	-	-	-	-	-	-	-	3,553	-	-3,553	-	-
TOTAL SUPPORT AND REVENUE	45,376	40,261	20,919	79,502	53,067	56,044	861	56,328	23,933	47,211	12,176	16,946	45,543	791,345	7,747	40,965	-300,499	1,037,724	826,167
EXPENSES																			
Development program activities	28,095	19,426	14,989	18,582	32,114	23,099	330	11,821	14,801	15,296	6,480	15,823	17,199	321,179	1,445	22,271	-146,483	416,470	371,875
Humanitarian program activities	11,961	14,995	3,872	46,659	13,523	26,954	-	39,731	12,252	20,448	4,372	316	15,311	336,280	3,006	14,135	-150,464	413,353	329,847
Supporting services, fundraising spend and other expenses	5,636	5,393	1,814	8,826	7,018	3,850	426	4,244	1,904	9,282	1,365	859	4,552	69,306	3,236	3,484	-3,553	127,643	111,562
TOTAL EXPENSES	45,693	39,815	20,676	74,068	52,655	53,903	756	55,797	28,957	45,026	12,217	16,997	37,063	726,765	7,687	39,890	-300,499	957,466	813,285
EXCESS (DEFICIENCY)	-317	446	243	5,434	411	2,141	105	531	-5,024	2,185	-41	-51	8,480	64,580	60	1,075	-	80,259	12,882
Net assets, beginning of year (restated)	13,035	4,324	761	6,962	4,988	4,918	503	6,051	15,481	15,207	3,606	3,901	13,980	367,803	3,050	2,031	-	466,599	383,804
Currency translation adjustment	-	-80	-	-	-	-	-9	-42	-	-	-176	31	-679	3,418	-	-	-	2,464	-1,330
Other changes	-8	21	58	-170	-0	2,482	-8	0	203	-0	2,766	-20	536	-25,252	3	-484	-	-19,872	30,338
NET ASSETS, END OF YEAR	12,710	4,712	1,062	12,226	5,399	9,541	592	6,540	10,660	17,392	6,154	3,861	22,317	410,550	3,112	2,622	-	529,449	425,694

COMBINED BALANCE SHEET ('000 EURO)

ASSETS																			
Cash and short term investments	28,231	21,944	12,917	28,398	22,662	18,081	235	14,942	24,509	21,748	153	7,428	15,009	269,886	5,484	5,707	-	497,335	414,365
Receivables from governmental and non-governmental agencies	4,079	10,163	267	59,016	76,257	821	38	23,904	-	14,036	2,067	117	13,398	120,284	2,412	11,274	-84,535	253,599	196,430
Deposits and other assets	3,305	1,801	19	1,058	1,571	747	572	-	351	46	593	756	-	183,675	31	73	-	194,598	186,945
Property and equipment, net	2,211	2,289	111	331	809	3,344	41	34	64	360	5,268	18	67	17,520	-	1,028	-	33,495	29,260
TOTAL ASSETS	37,827	36,197	13,313	88,803	101,299	22,993	886	38,881	24,925	36,191	8,081	8,318	28,474	591,365	7,927	18,083	-84,535	979,027	827,000
LIABILITIES AND FUND BALANCE																			
Accounts payable and accrued expenses	2,616	5,942	-	967	6,162	-	-	-	1,578	319	830	104	-	58,330	663	4,006	-	81,518	84,006
Advances by governmental and non-governmental agencies	16,807	25,310	10,961	33,197	88,043	5,049	223	29,081	12,687	16,374	733	2,536	6,108	83,638	541	10,025	-84,535	256,778	237,868
Debt and other liabilities	5,694	234	1,290	42,413	1,695	8,403	71	3,260	-	2,106	364	1,817	50	38,848	3,610	1,430	-	111,282	79,432
TOTAL LIABILITIES	25,117	31,486	12,251	76,577	95,900	13,452	294	32,341	14,265	18,799	1,927	4,457	6,158	180,816	4,814	15,461	-84,535	449,578	401,306
NET ASSETS	12,710	4,712	1,062	12,226	5,399	9,541	592	6,540	10,660	17,392	6,154	3,861	22,317	410,550	3,112	2,622	-	529,449	425,694
TOTAL LIABILITIES AND NET ASSETS	37,827	36,197	13,313	88,803	101,299	22,993	886	38,881	24,925	36,191	8,081	8,318	28,474	591,365	7,927	18,083	-84,535	979,027	827,000